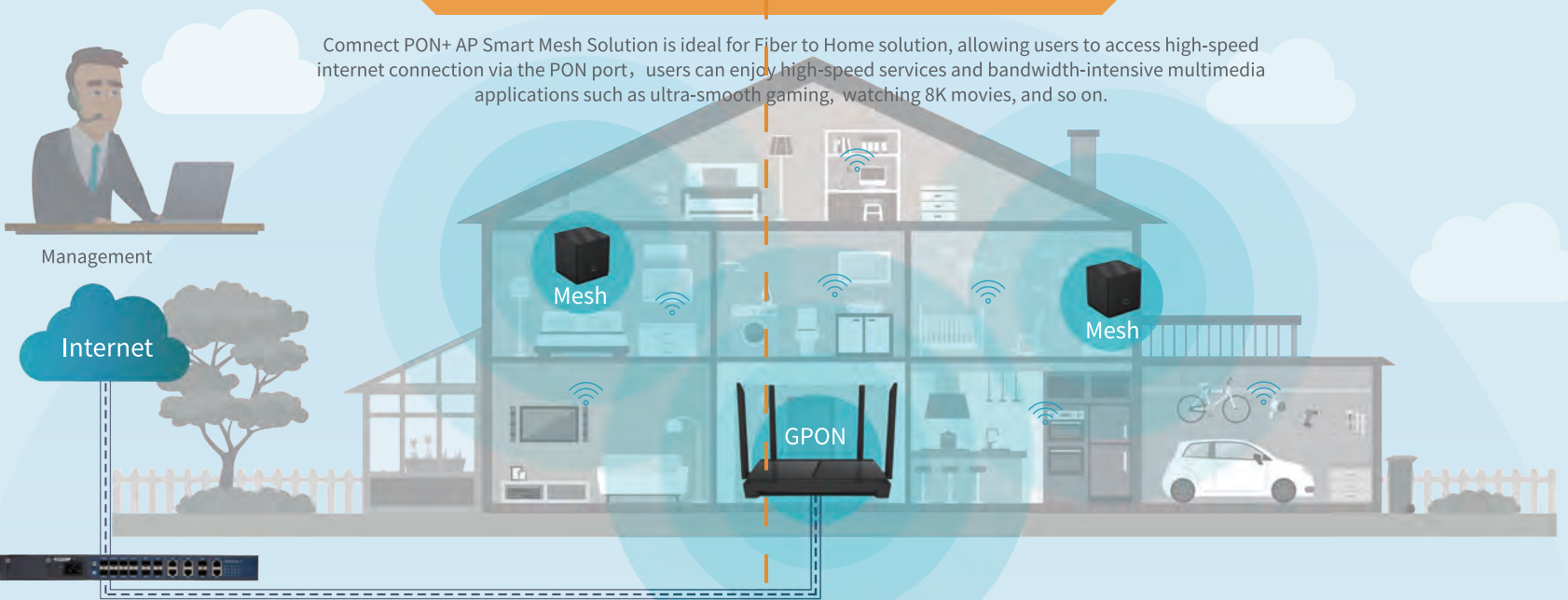



★ Connect PON + AP Smart Mesh Solution ★

Connect PON+ AP Smart Mesh Solution is ideal for Fiber to Home solution, allowing users to access high-speed internet connection via the PON port, users can enjoy high-speed services and bandwidth-intensive multimedia applications such as ultra-smooth gaming, watching 8K movies, and so on.



■ GPON/XGSPON

Description	1-Port GPON	N300 GPON with Voice	AC1200 GPON with Voice	AX1800/AX3000 GPON with Voice	AX3600 GPON with Voice	XGS-PON with Voice
						
Model No.	GP601R	GP622GVR	GP744GVT	GP844GVXE/GP854GVXE	GP864GVDE	XP602XVE
Wireless Performance	/	★★	★★★	★★★★★	★★★★★	/
WAN Type	1 x GPON	1 x GPON	1 x GPON	1 x GPON	1 x GPON	1 x XGS-PON
Wi-Fi Standards	/	Wi-Fi 4	Wi-Fi 5	Wi-Fi 6	Wi-Fi 6	/
Wi-Fi Speed	/	300Mbps	300 + 867 Mbps	574+1201/2402 Mbps	1201+2402 Mbps	/
Antennas	/	2 * 5dBi	4 * 5dBi	4 * 5dBi	4 * 3dBi	/
No. of Voice	0/1	1	1/2	2	1	1
No. of LAN	1 x 2.5GE LAN / 1 x GE LAN	1x GE LAN + 1 x FE LAN	2/4 x GE LAN	4 x GE LAN	1 x 2.5G LAN + 3 x GE LAN	1 x 10GE LAN + 1 x GE LAN
CATV	0/1	/	0/1	/	/	/
USB Port	/	/	/	USB 3.0	USB 3.0	/
Power Supply	DC 12V 0.5A	DC 12V 1A	DC 12V 1.5A	DC 12V 2A	DC 12V 2A	DC 12V 1A
Dimensions	90mm x 73mm x 25mm	132mm x 94mm x 27mm	202mm x 128mm x 35mm	232mm x 124mm x 31mm	273mm x 190mm x 58mm	156mm x 156mm x 38mm

CONNECT Product Brochure



SHENZHEN CONNECT TECHNOLOGY CO.,LTD

Add: 5F, Building 8A, Shenzhen International Innovation Valley,
Dashi 1st Road, Nanshan District, Shenzhen, China
Tel: +86 755 8650 7455
Email: sales@connect.com.cn
Web: www.connect.com.cn

About Connect

Established in 2012, Connect is a competitive and reliable partner offering high quality OEM/ODM service for networking and communication products. We offer a wide range of robust-built and cost-effective products including G/EPON, xDSL, WiFi Routers, Home Gateway and Network Switches, etc. We have been focusing on serving overseas customers, and we have a deep understanding of the needs of customers and the needs of the local market.

Except regular finish goods fulfillment, Connect also support professional **CKD** and **SKD** services, if needed.


AX3600 5G NR CPE with VoLTE

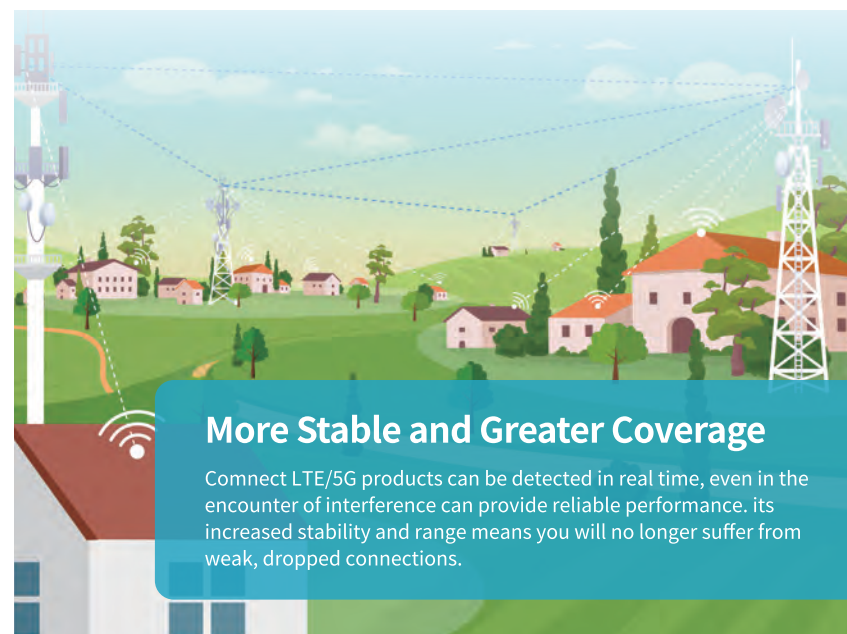
WR862GVNM



www.connect.com.cn

4G/5G CPE



Description	N300 Cat4 LTE CPE with VoLTE	AC1200 Cat6 LTE CPE with VoLTE	AX3600 5G NR CPE with VoLTE
			
Model No.	WR624VL	WR744GVL	WR862GVNM
Wireless Performance	★★	★★★	★★★★★
WAN Type	CAT 4 U/D: 50M/150M	CAT 6 U/D: 50M/300M	5G NR U/D: 1G/4.7G
Wi-Fi Standards	Wi-Fi 4	Wi-Fi 5	Wi-Fi 6
Wi-Fi Speed	300Mbps	300 + 867Mbps	1201+2402Mbps
Antennas	Wi-Fi 2*5dbi LTE 2*5dbi	Wi-Fi 2*5dbi LTE 2*5dbi	Wi-Fi *4, LTE/5G *8
SIM Port	1 x Micro Sim	1 x Micro Sim	1 x Nano SIM
No. of Voice	1 x VoLTE	1 x VoLTE	1 x VoRE&VoIP
No. of LAN	4 x FE LAN	4 x GE LAN	1 x 2.5G LAN + 1 x GE LAN
USB Port	/	/	USB 3.0
Power Supply	DC 12V 1A	DC 12V 1.5A	DC 12V 2.5A
Dimensions	202mm x 128mm x 35mm	202mm x 128mm x 35mm	85mm x 112mm x 200mm



More Stable and Greater Coverage

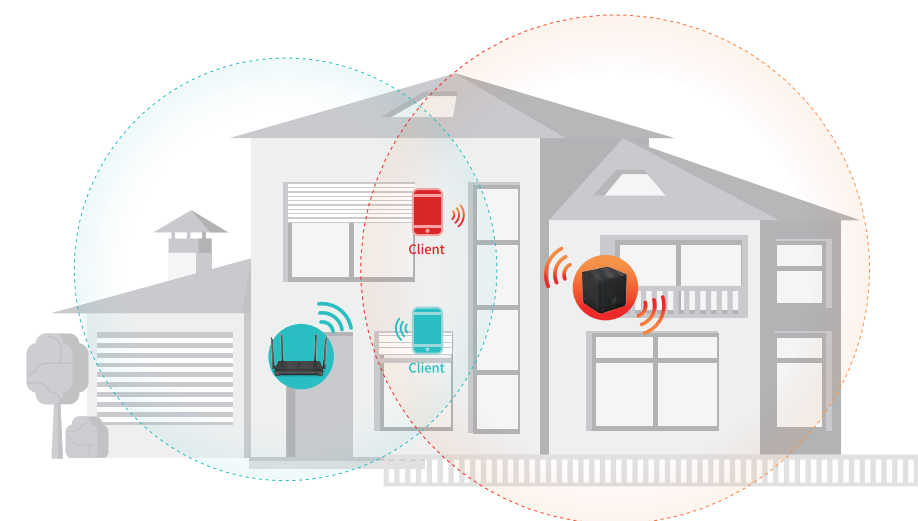
Connect LTE/5G products can be detected in real time, even in the encounter of interference can provide reliable performance. its increased stability and range means you will no longer suffer from weak, dropped connections.

Wi-Fi Router

Description	AC1200 Mesh	AX1800 Mesh	AX3000 Mesh	AX1800 Router	AX3000 Router
					
Model No.	M1200S-V3	MX1800E	MX3000E	WR843GXE	WR853GXE
Wireless Performance	★★★	★★★★★	★★★★★	★★★★	★★★★★
WAN Type	1GE WAN	1GE WAN	1GE WAN	1GE WAN	1GE WAN
Wi-Fi Standards	Wi-Fi 5	Wi-Fi 6	Wi-Fi 6	Wi-Fi 6	Wi-Fi 6
Wi-Fi Speed	300 + 867 Mbps	574 + 1201 Mbps	574 + 2402 Mbps	574 + 1201 Mbps	574 + 2402 Mbps
Antennas	2 * 3 dBi	4 * 3 dBi	4 * 3 dBi	4 * 5 dBi	4 * 5 dBi
No. of LAN port	1GE LAN	2GE LAN	2GE LAN	3GE LAN	3GE LAN
Power Supply	DC 12V 1A	DC 12V 1A	DC 12V 1A	DC 12V 1A	DC 12V 1.5A
Dimensions	95 x 95 x 90mm	104 x 104 x 106mm	150 x 150 x 70mm	202 x 128 x 35mm	217 x 132 x 40mm

Faster. Broader. Stronger. Higher Capacity

Our WiFi product upgrades your network to the next generation of Wi-Fi 6, The latest generation of Wi-Fi technology brings faster speeds, less lag, and higher capacity, enabling more simultaneous connections on your home network.



Navigation arrows