

AX1500 Wi-Fi6 Router

WR833GXR



802.11AX



Gigabit Port



MU-MIMO



Easymesh

More stable, Faster, Stronger, Broader

BSS Color

BSS Color marks frames from neighboring networks, and therefore WR833GXR can ignore them and only focus on your network tasks. Without extra work, it became much more efficient.

Beamforming

Concentrate the wireless signal to the client to enhance the signal strength.

1024-QAM, 10bits / Symbol

With the latest 1024-QAM, each symbol carries 10 bits, improving raw speeds by 25% compared to 802.11ac 256-QAM.

Greatly Reduce Lag

Providing smaller (but dedicated) sub-channels for multiple users simultaneously, the OFDMA mechanism can improve the average transmission rate per user. It is greatly reduced lag and queue.

Connect to More Devices Simultaneously

WiFi 6's MU-MIMO works with both uploads and downloads. This means that there's more than enough bandwidth for everyone whatever you're doing online.

Reduce Power Consumption

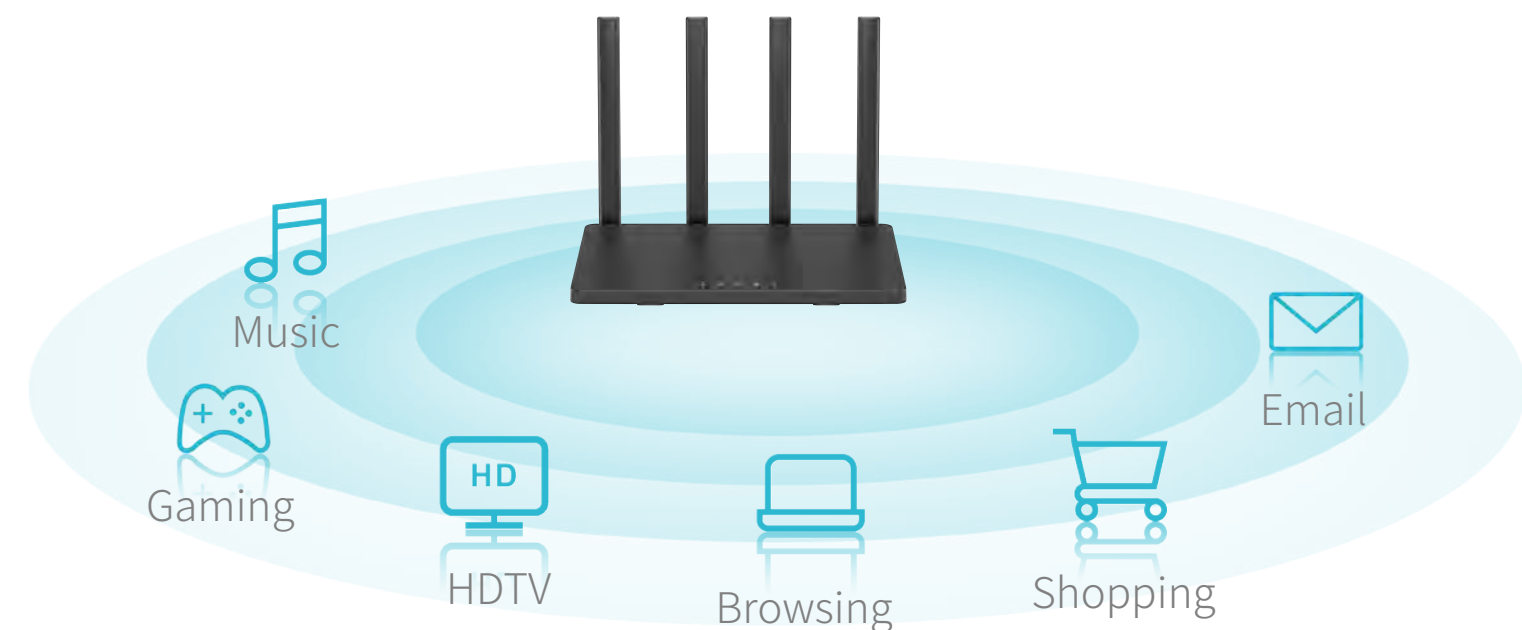
Target Wake Time(TWT) increases the sleep time of the STA to reduce power consumption.

Ultra-Fast Speed, Everywhere

- Excellent WiFi 6 Speed up to 1500 Mbps
- Form a Mesh network with your desired & qualified nodes.
- Larger system capacity

Seamless Roaming with One WiFi Name

WR833GXR Easymesh system keeps you connected as you roam seamlessly from room to room without ever dropping your WiFi signal, and all you need is the unified WiFi name and password to connect.



Main Features

Stronger Security (WPA3)

With more secure encryption in WiFi password safety and stronger protection against brute-force attacks, WPA 3 secures your WiFi.



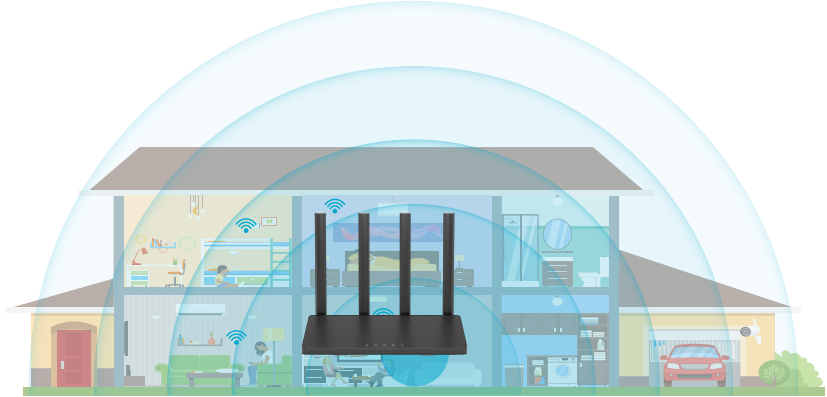
Full Gigabit Wired

Equipped with full gigabit ports, it supports up to 1000Mbps bandwidth access.



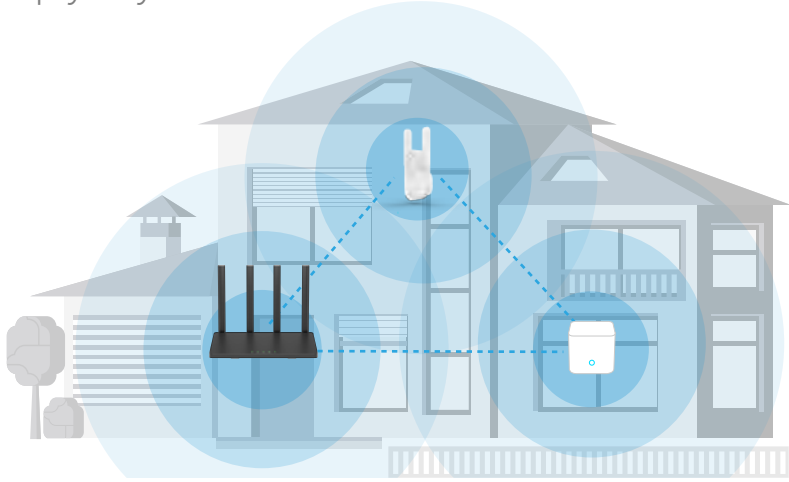
4 x 5 dBi External Antennas + Beamforming

With 4 x 5 dBi external antennas and beamforming technology, it can provide first-rank WiFi coverage and better WiFi signal.



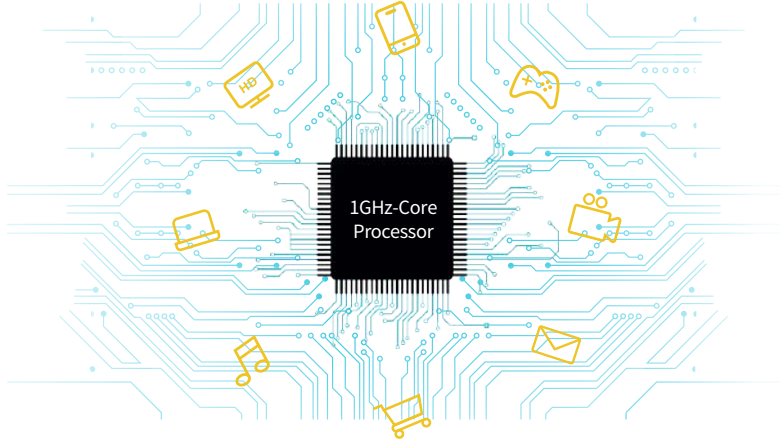
Discretionary Network

By adding more qualified nodes, it works with “same family” nodes supported easymesh to form a broader Mesh network simply anytime.



High Performance Processor

Up to 1G Hz Core brings a faster processing speed and provides the best operation.



Various Advanced Features

Supported with various advanced features, it guarantees a fast, stable and secure online experience.



Specifications

Wireless

- Wireless Standards: 2.4G:IEEE802.11b/g/n
5G:IEEE802.11a/n/ac/ax
- Mesh Protocol: IEEE802.11k/v
IEEE1905.1
- Signal Rate: 5GHz: 1201Mbps
2.4GHz: 300Mbps
- Operation Frequency: 2.4 GHz & 5 GHz
- Wireless Security: NONE/WEP/WPA2/WPA2 Mixes/WPA3/WPA3 Transition
- Basic Features: SSID Broadcast: Enable / Disable
DL/UL MU-MIMO
Beamforming
OFDMA
TWT
BSS coloring mechanism

Hardware

- Interfaces: 1 x 10/100/1000Mbps WAN Port
3 x 10/100/1000Mbps LAN Ports
- Buttons: WPS Button, RESET Button
- Power Supply: DC 12V 1A
- Antenna: 4 x 5dBi External Antennas
- Dimensions (W X D X H): (191 x 120 x 30) mm



Software

- WAN Type: Dynamic IP/Static IP/PPPoE
- DHCP Server: DHCP Server、DHCP Client List、DHCP Reservation
- Virtual Server: Port Forwarding, DMZ Host, UPnP
- VPN: PPTP Client, L2TP Client
- Security: Client Filter
- Firewall: Forbid WAN PING from internet
 - Forbid UDP flood attack
 - Forbid TCP flood attack
 - Forbid ICMP attack
- Internet Protocols: IPv4、IPv6
- Special Features: Parental Control
 - USB Sharing (Samba Server)
 - Dual-frequency integration, dual-frequency optimization
 - Guest Network
 - Easymesh

Environment

- Operating Temperature: 0°C~40°C (32°F~104°F)
- Storage Temperature: -40°C~70°C (-40°F~158°F)
- Relative Humidity: 10%~90%, no-condensing
- Storage Humidity: 5%~95%, no-condensing

Package Contents

- 1 x WR833GXR
- 1 X Power Adapter
- 1 x Ethernet Cable
- 1 x Quick Installation Guide